

CD4-10

REVISED 11/16/16

2ND STAGE PHONO PRE-AMP AND MATRIX ASSY. TAC-277

RIAA H.F. ROLL-OFF

OPTIONAL CHANGES

TERMINAL

WIRE

L SUB IN

WHT

R SUB IN

RED

GND

SHIELD

CH1

RED

CH2

WHT

CH3

RED

CH4

WHT

+B5(R217)

GRN

+B5(IC201)

GRN

CT203

RED

CT205

WHT

GND

SHIELD

CT201

WHT

CT202

RED

GND

SHIELD

CT204

RED

CT206

WHT

GND

SHIELD

GND

BLK (TO OUTPUT JACKS)

TO SEPARATION POTS

CT203/CT204

CT205/CT206

C201/C202

1uF 50V

E03427

LIN ROUT

ROUT

F201

R203/R204

8.2K

30 KHZ

FILTER

*1 C225 & C226 PHYSICALLY IN PARALLEL WITH R209 & R210

*2 C225 & C226

C203, 204, 213, 24 RECAP 10uF/63V

C211, 212, 215, 216 RECAP 4.7uF/63V

C201, 202, 207, 208 CHANGE TO 1.0uF/63V WIMA FILM, 5%

C223, 224 CHANGE TO 0.22/63V WIMA FILM, 5%

R213, 214, 215, 216, 221, 222 CHANGE TO 10K, 1%, MF

R217, 218, 219, 220 CHANGE TO 1K, 1%, MF

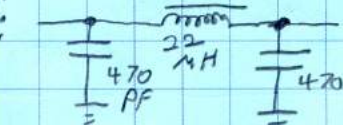
VR201, 202 CHANGE TO 20K, SEALED, MULTI-TURN

CHANGES, STUDIO

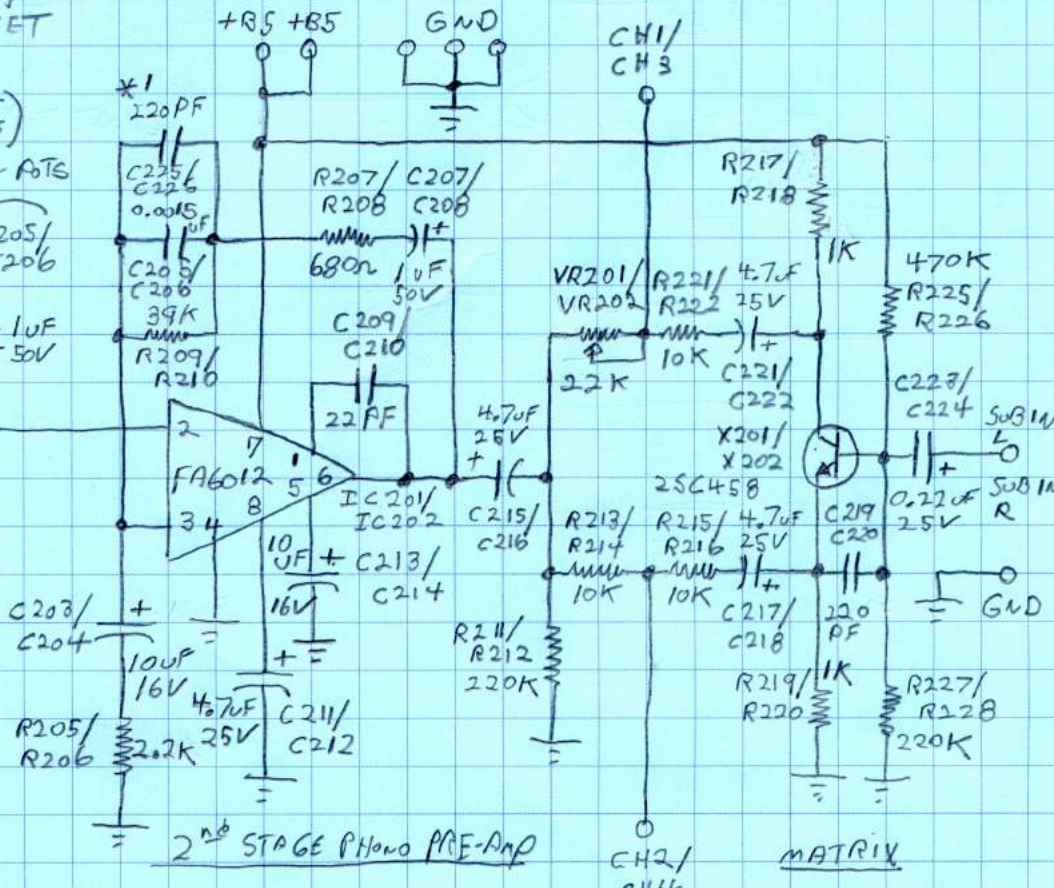
C217/C218, C221/C222 FROM 4.7uF TO: 4.7uF + 10uF

C223/C224 FROM 0.22uF TO: 0.22uF + 202uF

ADD:



BETWEEN F201 L & ROOT AND CT203/CT204. REQUIRES ETCH CUT BETWEEN F201 AND CT203/CT204



2ND STAGE PHONO PRE-AMP

MATRIX

CH2/CH4