

CD4-10
CARRIER RECOVERY & ARNS TDM-4 PAGE 1 OF 4
E OPTIONAL CHANGES REVISED 11-16-16

TERMINAL	WIRE	OPTIONAL CHANGES	REVISED 11-16-16
B4	YEL	RECAP C316, 317, 397, 398 + 349	330F/63V
B1	WHT	RECAP C350, 391, 392, 343, 344, 341, 342 + 318	100F/50V
B3	ORN	RECAP C318 + 319	2.20F/50V
GND	BLK	RECAP C314, 315, 307 + 308	1.00F/63V WIND APLY.
CP321	WHT	RECAP C371 + 372	0.680F/63V WIND POLY.
CP322	RED	RECAP C393 + 394	0.10F/63V WIND POLY.
GND	SHIELD	RECAP C361, 362, 411, + 412	4.70F/50V WIND POLY.
CP319	WHT	RECAP C337, 338 + 347	0.470F/63V WIND APLY.
CP320	RED	REPLACE VR301 + 302 WITH BOURNS 2.2K M.T. SEALED	
GND	SHIELD	REPLACE VR303 + 304 WITH BOURNS 4.7K M.T. SEALED	
B6	BLU	REPLACE VR305 + 306 WITH BOURNS 10K M.T. SEALED	
CP312	BLK	REPLACE VR309, 310, 313 + 314 WITH BOURNS 22K M.T. SEALED.	
CP313	BLK		
CP311	RED		
GND	BLK		
CP306	WHT		
CP308	RED		
CP310	SHIELD		
CP305	WHT		
CP307	RED		
CP309	SHIELD		
CP301	WHT		
CP302	RED		
GND	SHIELD		

TO: FUNCTION

R359 470n

B3

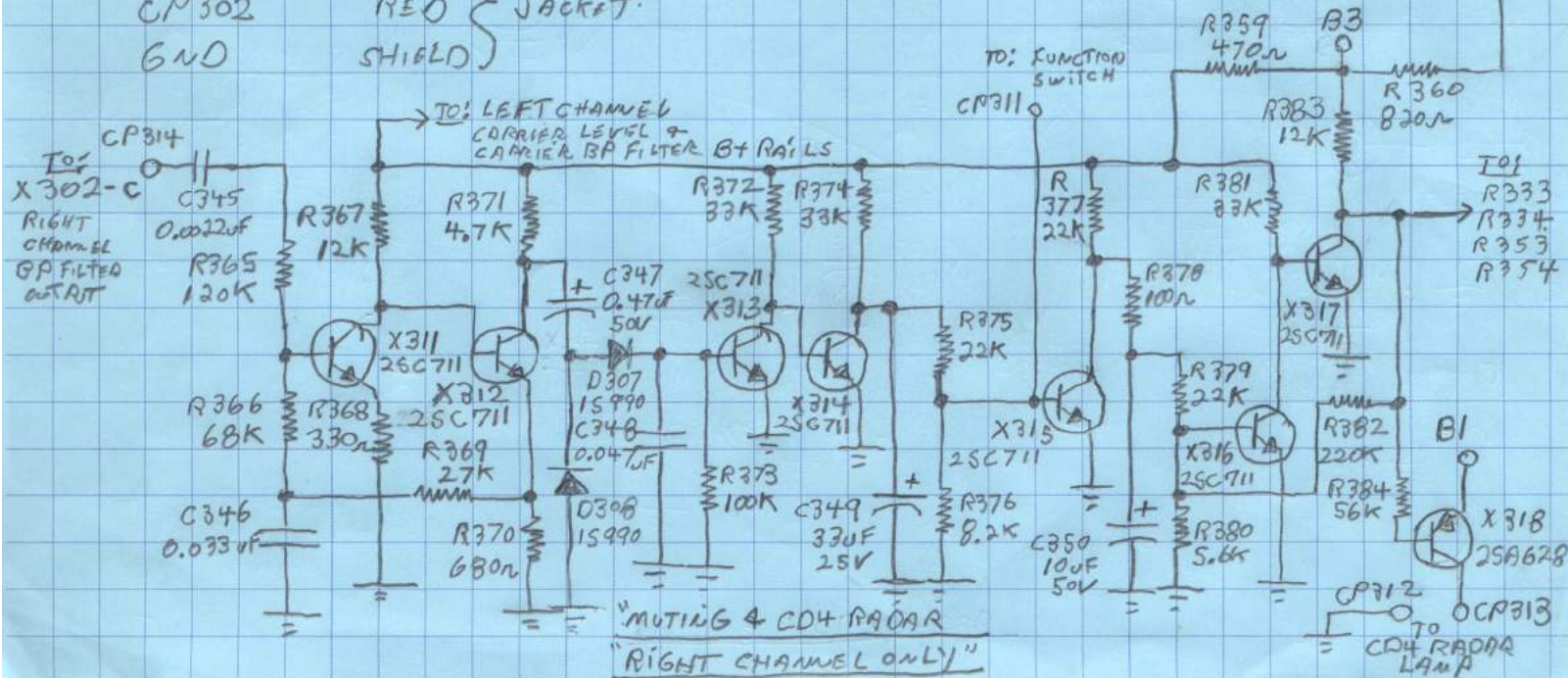
↑

100

RIGHT CHANNEL

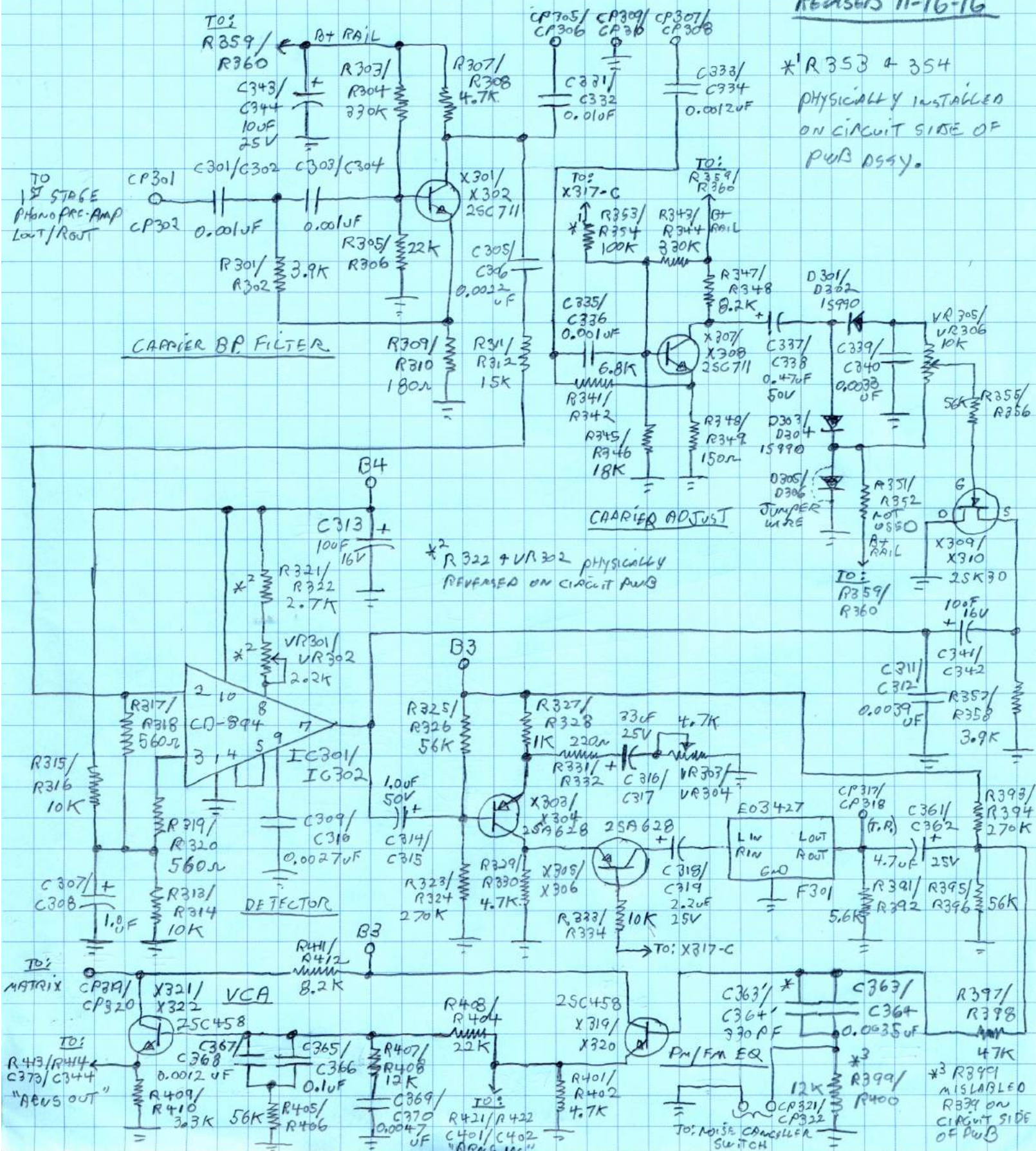
CARRIER LEVEL 4

CARRIER BP FILTER AT RAILS



C04-10 CARRIER RECOVERY & ARNS TDM-4

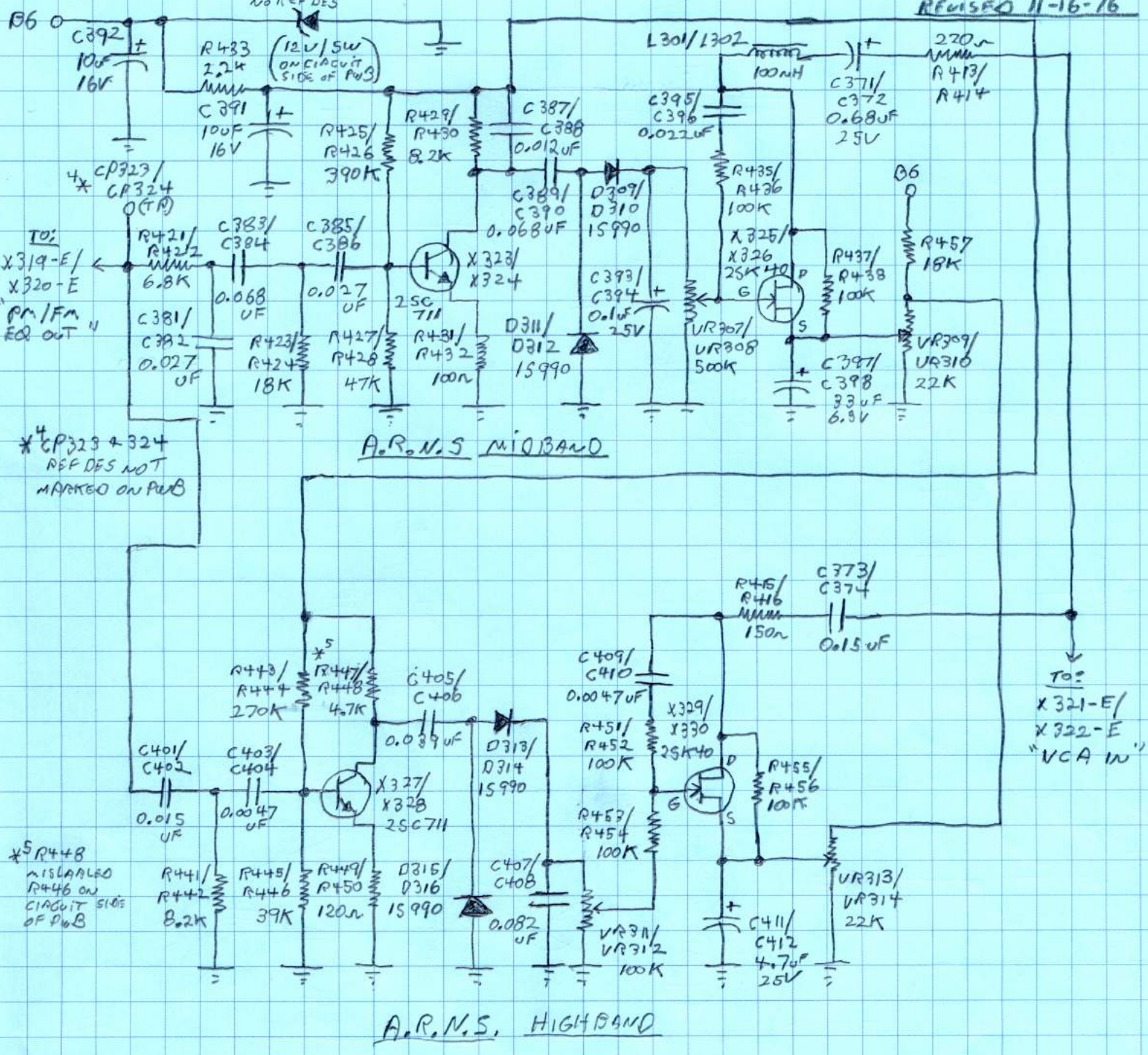
PAGE 2 OF 4
REVERSED 11-16-16



CD4-10 CARRIER RECOVERY & ARNS

TDM-4

PAGE 3 OF 4
REVISED 11-16-16



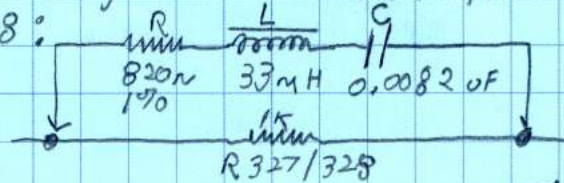
CD4-10

CARRIER RECOVERY & ARMS TDM-4

PAGE 4 OF 4

PAGE ADDED 11-16-16CHANGES, STUDIO

C314, 315, 318 & 319: ADD 4.7uF/50V WIMA POLY IN PARALLEL. C314, 315 = 5.7uF TOTAL
 ADD "RLC" NETWORK ACROSS R327 & 328: C318, 319 = 6.9uF TOTAL

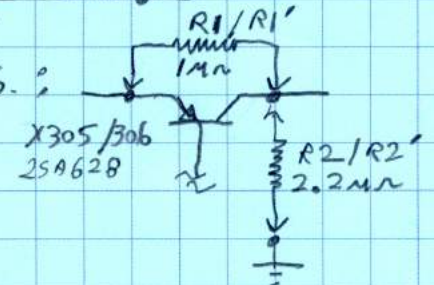


ADD "R1/R1'", 1MΩ & "R2/R2'", 2.2MΩ ACROSS X305 AND X306.

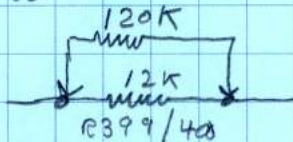
R411 & 412; CHANGE FROM: 8.2kΩ TO: 18kΩ

R413 & 414; CHANGE FROM: 220Ω TO: 560Ω

R431 & 432; CHANGE FROM: 100Ω TO: 220Ω



R399 & R400; ADD 120kΩ IN PARALLEL:



R447 & 448; CHANGE FROM: 4.7kΩ TO: 1.8kΩ

R449 & 450; CHANGE FROM: 120Ω TO: 39Ω

C407 & 408; CHANGE FROM: 0.082uF TO: 0.022uF

VR311 & 312; CHANGE FROM: 100kΩ TO: 250kΩ SEALED M.T.

C409 & 410; CHANGE FROM: 0.0047uF TO: 0.001uF

C395 & 396; CHANGE FROM: 0.022uF TO: 0.018uF

R435 & 436; CHANGE FROM: 100kΩ TO: 220kΩ

VR307 & 308; CHANGE FROM: 500kΩ TO: 1MΩ SEALED M.T.

REPLACE JUMPER WIRE FROM VR307 & 308 "WIPER" TO X325 & 366 "GATE" WITH R5 & R5', 100kΩ

ADD R8 & R8', 470kΩ FROM VR307 & 308 "WIPER" TO GND

ADD R3/R3', 33kΩ AND R4/R4', 56kΩ FROM C369/370 TO X321/322 "BASE"

ADD R6/R6' & R7/R7', 3.3kΩ; X1/X1', 2SC1000 & D1/D1', D2/D2', C1/C1'

FROM X323/324 "COLLECTOR" TO C389/390 & C393/394:

